



**The
Treehouse**
Out of School & Holiday Club

Prospectus

Barn Hill Farm Offices

Selby Road

Howden

DN14 7JP

Tel: 01430 432033

Email:

treehouse@wellybobsdaynursery.co.uk

Web:

www.wellybobsdaynursery.co.uk

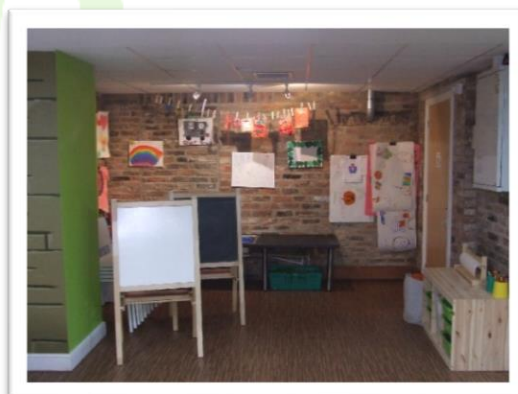
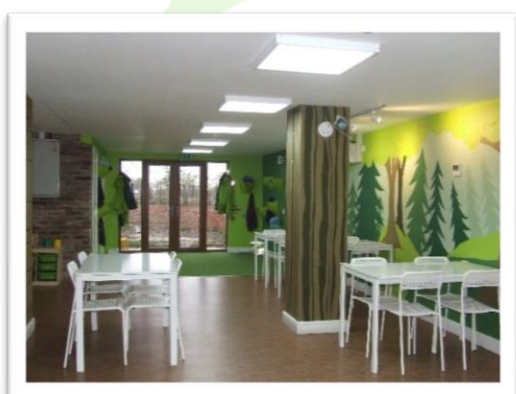
Welcome to The Treehouse Out of School & Holiday Club

Part of the hugely successful 'Wellybobs Day Nursery' the Treehouse opened its doors in September 2017 offering out of school care for children aged 4yrs to 14yrs of age in a separate adjoining building.

We are located on a farm on the outskirts of the market town of Howden, easily accessible from the A63 and M62 with private parking for parents.

Children are welcomed from 7.30am where they can have breakfast, play, see their friends, complete homework or practice reading before leaving for school on our own buses. After school the children are transported back to Treehouse and have a snack tea after which they can indulge in all sorts of games and activities, we close at 6pm.

During Holiday Club we have exciting crafts and activities and trips out, a schedule of events is sent to all parents so you can see what activities are on offer day to day.



A Fantastic setting

Spread over two floors with its own games room and private garden the Treehouse offers children a wide variety of activities in a spacious environment.

The ground floor offers arts & crafts, stereo, karaoke, disco, TV/DVD and a wide range of toys and board games, our private garden has artificial grass for year round play and is equipped with materials for den building, sports equipment and toys for children to create their own games together.

On the first floor we have a games room with Wii console and DVD player. In the main room we have Desktop PCs installed with Magic Desktop (which replaces a normal desktop and makes all access child friendly) the PC's can be used for homework or play additionally the children have to complete tasks in GE Academy to gain tokens to play the arcade games.

We have a large library of fiction and non-fiction books for all age ranges with comfy chairs and blankets to relax, we have four colouring tables, a home corner and even more toys and games available, we also on occasion, project PG & U movies onto our biggest wall creating our own little cinema.



The building has its own environmental control system, providing warmth in winter and cooling in summer. The systems in each room are independent and adjust accordingly to the required temperature and the entire building is ventilated constantly with fresh air from outside which is heated to the ambient room temperatures via a heat exchanger.

Catering

Nutrition is of the utmost importance for young growing children and we pride ourselves on providing nutritious meals cooked fresh every day on the premises by our Cook.

We change our menus on a weekly basis and these menus are regularly rotated to ensure variety for the children. The menu has been designed to provide a healthy, nutritious and well-balanced diet ensuring that all the meals are rich in vitamins and minerals and we are more than happy to accommodate any special dietary requirements and food allergies that your child may have.

Fresh fruit and water are freely available to children all day.

Opening Times & Prices

| | | |
|-------------------------------|--------------------------|---------------|
| Breakfast Club | 7.30am - 9.00am | £6.80 |
| Afternoon School Club | 15.30pm -18.00pm | £14.20 |
| Full Day Holiday Club | 7.30am - 18.00pm | £31.50 |
| Morning Holiday Club | 7.30am - 12.30pm | £19.50 |
| Afternoon Holiday Club | 13.00pm - 18.00pm | £19.50 |

Please note all fees are subject to an annual increase

We are open Monday to Friday, 7:30am until 6:00pm with an option of early starts from 7:15am and late collections up until 6:15pm by prior arrangement.

We are open 52 weeks of the year and closed on all bank holidays of which there is no charge.

Out of School Club: The breakfast club includes breakfast and transportation to school, the afternoon session includes transportation from school and a light tea. Fruit and water available throughout the sessions.

Holiday Club: A morning session includes breakfast and a two-course lunch. Afternoon sessions includes a two-course light tea. Snacks are offered throughout the day. Full day includes breakfast, two-course lunch and a two-course light tea.

More information on our fees and discounts including the use of vouchers can be found on our website <https://www.wellybobsdaynursery.co.uk/opening-times-prices/>

Visits

We welcome visits by appointment. Please call 01430 432033 or e-mail treehouse@wellybobsdaynursery.co.uk

Enquiry Form

| Carer | | | |
|--|--|---------------|--|
| Relationship to Child Father/Mother/Other | | | |
| First Name | | Last Name | |
| Home Telephone | | Mobile | |
| Email Address | | | |
| Home Address | | | |
| Child | | | |
| Gender | | | |
| First Name | | Last Name | |
| Known Name | | Date of Birth | |

| Childcare Requirements | | | | | |
|-------------------------------------|---|-----|-----|-------|-----|
| Required Start Date | Please mark the days and any extra services you require below | | | | |
| Morning School Club | Mon | Tue | Wed | Thurs | Fri |
| After School Club | Mon | Tue | Wed | Thurs | Fri |
| Holiday club | Mon | Tue | Wed | Thurs | Fri |

If we do find that we do not require a place we will inform the setting as soon as possible.

Signed (parent).....

Print Name.....

Date.....

Please complete and return to treehouse@wellybobsdaynursery.co.uk or Barnhill Farm Offices, Selby Road, Howden, DN14 7JP